

MAXITROL

Selectra®

SC20C Series

Signal Conditioner with
Discharge Air Temperature Limiter

For direct or indirect fired gas applications, the track mounted SC20C Series performs multiple functions. The control will convert a controller's DC output signal of 4 to 20 milliamps or 0 to 10 volts to a 0 to 20 volt DC signal used to drive the Maxitrol Selectra® valve.

It will also limit the heater's maximum selected discharge air temperature regardless of the controller supplied input. Three discharge temperature ranges are available and are selectable using a 3-pin header. The temperature is set within the selected range using the onboard potentiometer. Temperature is measured using a TS194/TS194Q with MT Series mixing tube.

Modulator and modulator-regulator valves are available up to 5 psi (350 mbar) inlet pressure, 30,000 CFH (850 m³/h) maximum, and pipe sizes from 3/8" to 4". (For additional valve information see Bulletin MT2035, or consult your Maxitrol sales representative.)



Dimensions: 7.5" L x 3.38" W x 2.09" H

SIGNAL CONDITIONER:

Ambient Limits.....-40° to 150°F (-40° to 66°C)

SIGNAL CONDITIONER POWER REQUIREMENTS:

24V AC transformer, 20 VA capacity (50/60 Hz).
(No grounded secondary.)

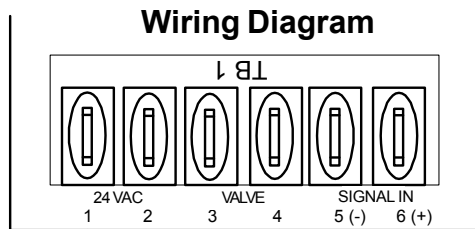
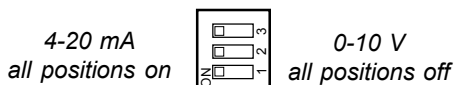
LIMITS DISCHARGE AIR TEMPERATURE:

| | |
|-------------------------------|-------------|
| Three Temperature Ranges: | Jumper Pins |
| 80° to 130°F (27° to 54.5°C) | None |
| 110° to 160°F (43° to 65.5°C) | 2 & 3 |
| 150° to 200°F (65.5° to 93°C) | 1 & 2 |

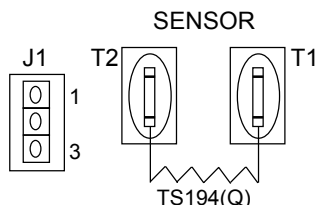
CONNECTIONS:

1/4" Spade

Three Position DIP Switch



(Note Polarity)



! IMPORTANT - READ PRIOR TO INSTALLATION

TO AVOID INTERNAL DAMAGE TO THE SC20C SERIES SIGNAL CONDITIONERS FOLLOW THESE GUIDELINES:

1. Transformer secondary must not be grounded in any portion of the circuit external to the SC20C Series signal conditioners. If existing transformer is grounded, a separate isolated transformer must be used.
2. Multiple SC20C Series signal conditioners controlled by a signal source with common outputs (terminals 5 & 6) require separate transformers for each SC20C Series signal conditioner.
3. Multiple SC20C Series signal conditioners powered by a single transformer require isolated signal inputs (terminals 5 & 6) to each SC20C Series signal conditioner.

Maxitrol Company
23555 Telegraph Rd., P.O. Box 2230
Southfield, MI 48037-2230 U.S.A.
248.356.1400 • Fax 248.356.0829

Mertik Maxitrol
European Representatives
Warnstedter STrasse 3 06502 Thale, Germany
49.3947.400.0 • Fax 40.3947.400.200
Industriestrasse 1 48308 Senden, Germany
49.2597.9632.0 • Fax 49.2597.9632.99